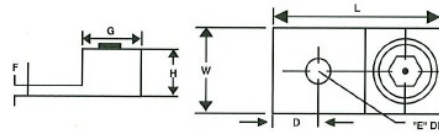
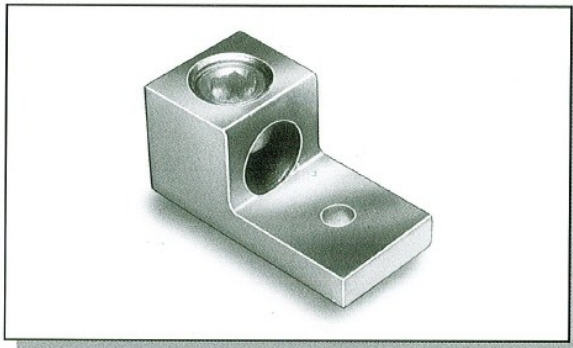


EBCHQ

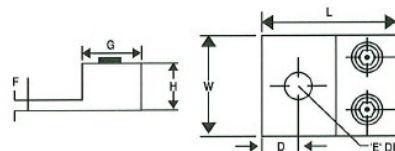
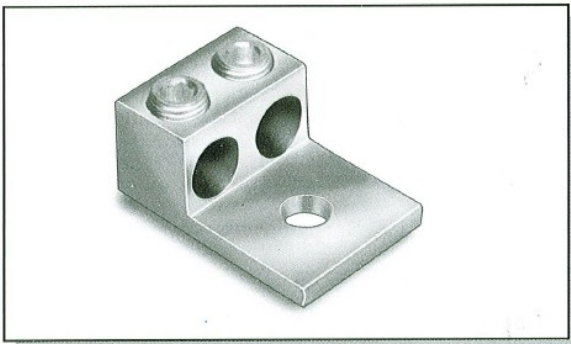
ALLUMINIUM SINGLE BARREL CONNECTORS, ONE HOLE MOUNT



- For copper and or aluminium conductors.
- Easy installation, no tools required.
- Tin plated for low contact resistance.
- Constructed from high strength aluminium.

| PART NO. | CONDUCTOR RANGE (AL OR CU) | | DIMENSIONS - IN MM AND INCHES. | | | | |
|----------|----------------------------|-----------|--------------------------------|---------------|---------------|-----------|---------------|
| | MAX | MIN | L | W | D | BOLT HOLE | F |
| 99001 | 4 STR | 14 AWG | 27.00 (1.10) | 12.70 (0.50) | 5.95 (0.234) | 1/4 | 2.40 (0.094) |
| 99002 | 2 STR | 14 AWG | 29.40 (1.157) | 12.70 (0.50) | 7.55 (0.297) | 1/4 | 2.75 (0.108) |
| 99003 | 1/0 STR | 14 AWG | 37.10 (1.46) | 15.90 (0.625) | 11.10 (0.437) | 1/4 | 4.70 (0.185) |
| 99004 | 2/0 STR | 14 AWG | 37.10 (1.46) | 15.90 (0.625) | 11.10 (0.437) | 1/4 | 4.70 (0.185) |
| 99005 | 250 KCMIL | 6 STR | 50.60 (2.00) | 21.75 (0.856) | 12.75 (0.50) | 5/16 | 6.40 (0.251) |
| 99006 | 300 KCMIL | 6 STR | 50.60 (2.00) | 21.75 (0.856) | 11.90 (0.468) | 5/16 | 6.40 (0.251) |
| 99007 | 350 KCMIL | 6 STR | 57.15 (2.25) | 28.60 (1.125) | 12.70 (0.50) | 3/8 | 6.40 (0.251) |
| 99008 | 500 KCMIL | 4 STR | 71.50 (2.814) | 38.10 (1.50) | 19.05 (0.75) | 3/8 | 8.00 (0.315) |
| 99009 | 600 KCMIL | 2 STR | 81.00 (3.190) | 38.10 (1.50) | 20.60 (0.811) | 3/8 | 11.10 (0.437) |
| 99010 | 800 KCMIL | 300 KCMIL | 85.70 (3.374) | 44.50 (1.75) | 22.20 (0.874) | 5/8 | 12.70 (0.50) |
| 99011 | 1000 KCMIL | 500 KCMIL | 85.70 (3.374) | 44.50 (1.75) | 22.20 (0.874) | 5/8 | 12.70 (0.50) |

ALLUMINIUM TWO BARREL CONNECTORS, ONE HOLE MOUNT



- For copper and or aluminium conductors.
- Easy installation, no tools required.
- Tin plated for low contact resistance.
- Constructed from high strength aluminium.

| PART NO. | CONDUCTOR RANGE (AL OR CU) | | DIMENSIONS - IN MM AND INCHES. | | | | |
|----------|----------------------------|----------|--------------------------------|---------------|---------------|-----------|---------------|
| | MAX | MIN | L | W | D | BOLT HOLE | F |
| 99012 | 1/0STR | 14AWG | 37.10 (1.46) | 30.95 (1.22) | 11.10 (0.437) | 1/4 | 4.70 (0.185) |
| 99013 | 2/0STR | 14AWG | 37.10 (1.46) | 31.75 (1.25) | 10.70 (0.421) | 1/4 | 4.70 (0.185) |
| 99014 | 250KCMIL | 6STR | 65.10 (2.562) | 41.70 (1.642) | 22.20 (0.875) | 3/8 | 6.40 (0.252) |
| 99015 | 350KCMIL | 6STR | 73.00 (2.874) | 48.60 (1.913) | 22.20 (0.875) | 1/2 | 6.40 (0.252) |
| 99016 | 600KCMIL | 2STR | 81.00 (3.19) | 61.10 (2.40) | 15.90 (0.625) | 1/2 | 11.10 (0.437) |
| 99017 | 800KCMIL | 300KCMIL | 85.70 (3.374) | 80.90 (3.185) | 22.20 (0.875) | 5/8 | 12.70 (0.50) |
| 99018 | 1000KCMIL | 500KCMIL | 85.70 (3.374) | 80.90 (3.185) | 22.20 (0.875) | 5/8 | 12.70 (0.50) |