

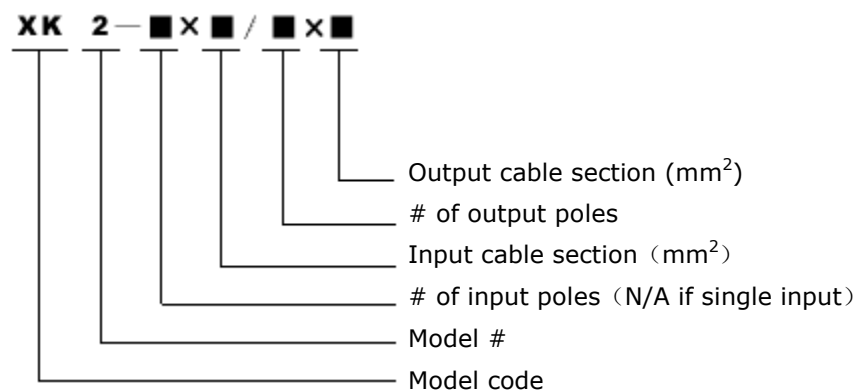


XK2 multi-purpose terminal blocks

Product description

XK2 multipurpose terminal blocks are designed for a wide variety of electrical systems. Its rated voltage is 690V, working voltage 220/440V, and rated current 630A. It can support 25mm² ~ 300mm² for gauge in and 2.5mm² ~ 150mm² for gauge out. The unique socket design provides customers safe and reliable installation. XK2 is a perfect substitute for conduction block, insulation base & protection enclosure.

How to read the model name:



Illustration

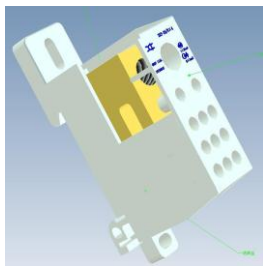


Figure 1



Figure 2



Figure 3

We choose modular design for XK2 blocks, for easy mounting and installation. Each block has a conductor core, covered by protective layer, sitting on top of insulator base, as shown in Figure1. User can choose three wire connecting methods for input wire

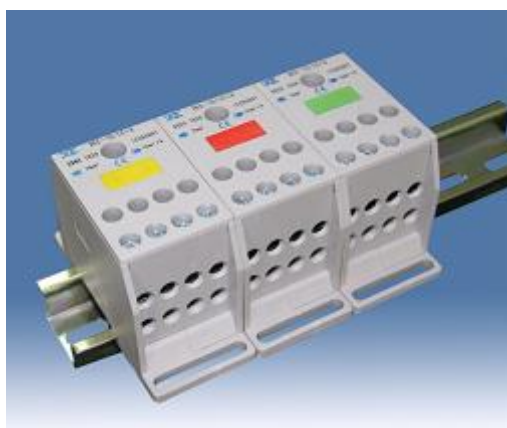
1. Direct connect (Figure 2)

2 only apply when input cable section $\geq 120 \text{ mm}^2$. Output is always direct connection. The wire tightening screw (Figure3) has round shape end. It increases the connecting area and hence the reliability of the connection. For those input cable section $\leq 70 \text{ mm}^2$, we also provide interconnecting wiring method as shown in Figure6. Every single block can be mounted on DIN rail or mounting panel.

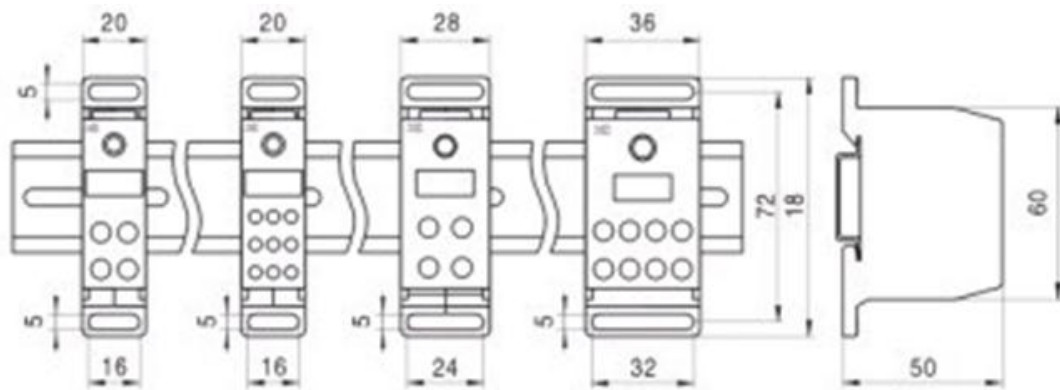
With all the listed features, XK2 blocks can provide hundreds of combinations of connecting methods, leaving the project owner, architecture designer and wiring professionals remarkable flexibility.

XK2 block specifications

Model	Cable size (mm ²) in/out	Installation dimensions	Screw model in/out	Wire stripping requirement (mm) in/out
35716 to 35724 XK2-35/4×10	Input cable 10-35mm ² , output cable 2.5-10mm ²	-A-,-E-	M8/M5	18/10,22
35700 to 35708 XK2-35/9×4	Input cable 10-35mm ² , output cable 1-4mm ²	-B-,-E-	M8/M4	18/7,14,24
35762 to 35770 XK2-50/4×16	Input cable 16-50mm ² , output cable 4-16mm ²	-C-,-E-	M8/M5	18/10,22
35727 to 35735 XK2-50/6×10	Input cable 16-50mm ² , output cable 2.5-10mm ²	-C-,-E-	M8/M5	18/7,14,24
35742 to 35750 XK2-2×70/8×10	Input cable 25-70mm ² , output cable 2.5-10mm ²	-D-,-E-	M8/M6	21/10,20
35780 to 35788 XK2-70/6×16	Input cable 25-70mm ² , output cable 4-16mm ²	-D-,-E-	M8/M6	18/10,22



Physical Features:



FigureA

FigureB

FigureC

FigureD

FigureE

Model	Height	Depth	Width	Weight/Pcs
35716 to 35724 XK2 - 35/4×10	81.6	50	20	106g
35700 to 35708 XK2 - 35/9×4				112g
35762 to 35770 XK2 - 50/4×16	81.6	50	28	169g
35727 to 35735 XK2 - 50/6×10				167g
35780 to 35788 XK2 - 70/2×25+4×16	81.6	50	36	223g
35742 to 35750 XK2 - 70/8×10				228g

Rated Current: Max 630A

Rated Voltage: 690V