



File No.:E133481



File No.:R50029721



File No.:CQC02001001940



## Features

- 7A switching capability
- 1.5KV dielectric strength (between coil and contacts)
- Various terminals ,test button available
- Gold plated contact available
- Conform to the CE low voltage directive
- 2 to 4 pole configurations
- Environmental friendly product available (RoHS compliant)
- Outline Dimensions: 28.0 x 21.5 x 35.0 mm

## CONTACT DATA

Contact arrangement	2C, 3C	4C
Initial contact resistance Typ.	50mΩ (at 1A 24VDC)	
Contact material	AgCe, AgCe+Au plated	
Contact rating (Res. load)	7A 250VAC/30VDC	5A 250VAC/30VDC
Max. switching voltage	250VAC / 30VDC	
Max. switching current	7A	5A
Max. switching power	210W 1750VA	150W 1250VA
Mechanical life	2 x 10 <sup>7</sup> ops	
Electrical life	1 x 10 <sup>5</sup> ops	

## CHARACTERISTICS

Initial insulation resistance	1000MΩ (at 500VAC)	
Dielectric strength	Between coil & contacts	1500VAC 1min.
	Between open contacts	1000VAC 1min.
	Between contact sets	1500VAC 1min.
Operate time (at nomi. volt.)	25ms	
Release time (at nomi. volt.)	25ms	
Shock resistance	Functional	100m/s <sup>2</sup>
	Destructive	1000m/s <sup>2</sup>
Vibration resistance	10 to 55Hz 1mm	
Humidity	98% RH, +40°C	
Ambient temperature	-55°C to +70°C	
Termination	PCB, Plug-in	
Unit weight	37g	
Construction	Dust cover	

## COIL

Coil power	DC type: 900mW; AC type: 1.2VA
------------	--------------------------------

## COIL DATA

Nominal Voltage (VDC)	Pick-up Voltage (VDC)	Drop-out Voltage (VDC)	Coil Resistance (Ω)
5	4.0	0.50	27.5 ± 10%
6	4.8	0.60	40 ± 10%
12	9.6	1.20	160 ± 10%
24	19.2	2.40	650 ± 10%
48	38.4	4.80	2600 ± 15%
110	88.0	11.0	11000 ± 15%

Nominal Voltage (VAC)	Pick-up Voltage (VAC)	Drop-out Voltage (VAC)	Coil Resistance (Ω)
6	4.80	1.80	11.5 ± 10%
12	9.60	3.60	46 ± 10%
24	19.2	7.20	184 ± 10%
48	38.4	14.4	735 ± 10%
120	96.0	36.0	4550 ± 15%
220/240	176.0	66.0	14400 ± 15%

## SAFETY APPROVAL RATINGS

UL&CUR	2C: 7A 250VAC/30VDC 3C,4C: 5A 250VAC/30VDC
TÜV	2C,3C: 7A 250VAC/30VDC 4C: 5A 250VAC/30VDC

# ORDERING INFORMATION

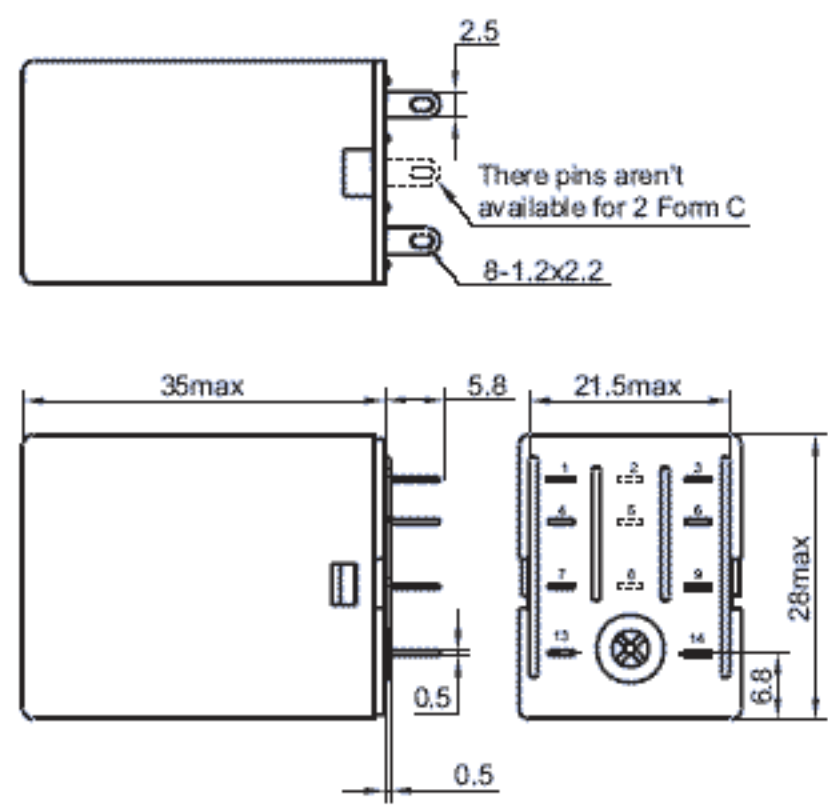
Type	JZX-18FF / A 012 2Z 1 G D XXX
Coil voltage form	A: AC Nil: DC
Coil voltage	DC: 5 to 110VDC AC: 6 to 240VAC
Contact arrangement	2Z: 2 Form C 3Z: 3 Form C 4Z: 4 Form C
Mounting Termination	1: Type 1 (Socket); 2: Type 2 (PCB); 3/4/5: Type 3/4/5 Flange-Mounting ( See the Following )
Contact material	G: AgCe+Au plated Nil: AgCe
LED	D: With LED Nil: Without LED
Customer special code	Only for special requirements, e.g. 555 stands for RoHS compliant

## OUTLINE DIMENSIONS, WIRING DIAGRAM AND PC BOARD LAYOUT

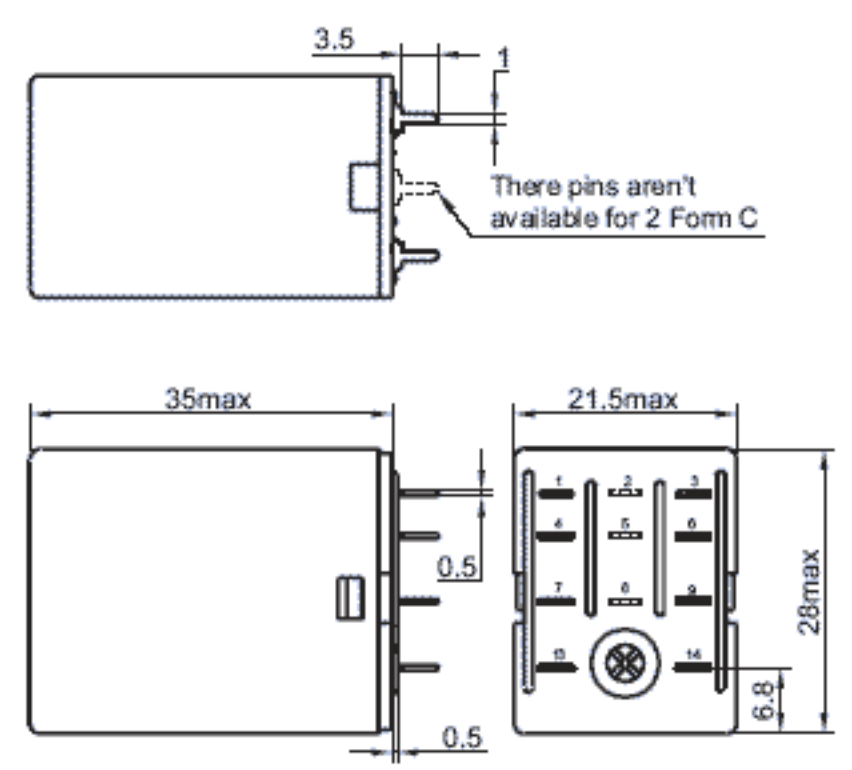
Unit: mm

### Outline Dimensions

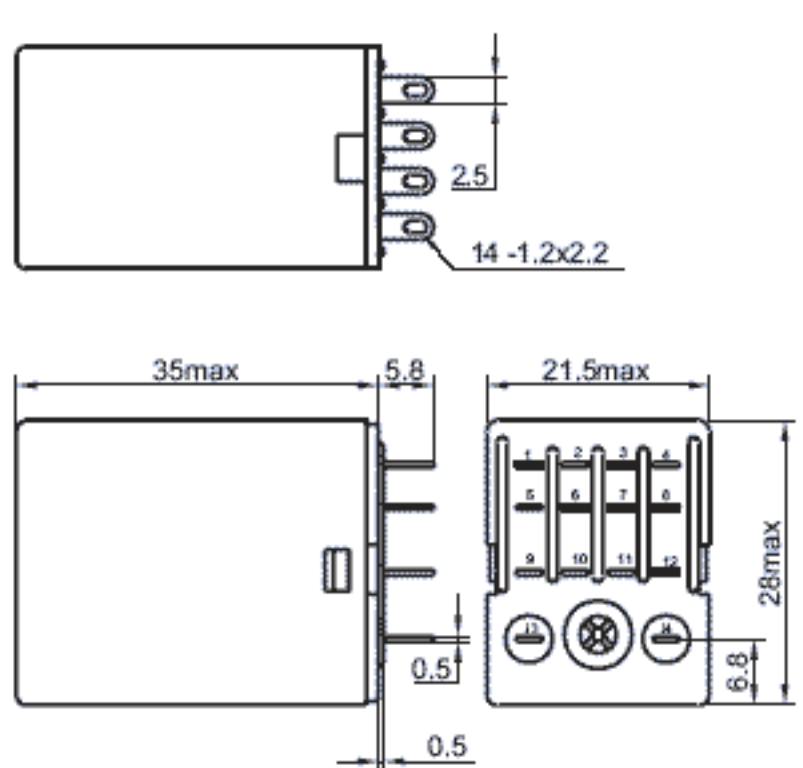
JZX-18FF/ □□□□-2Z1□□ / 3Z1□□



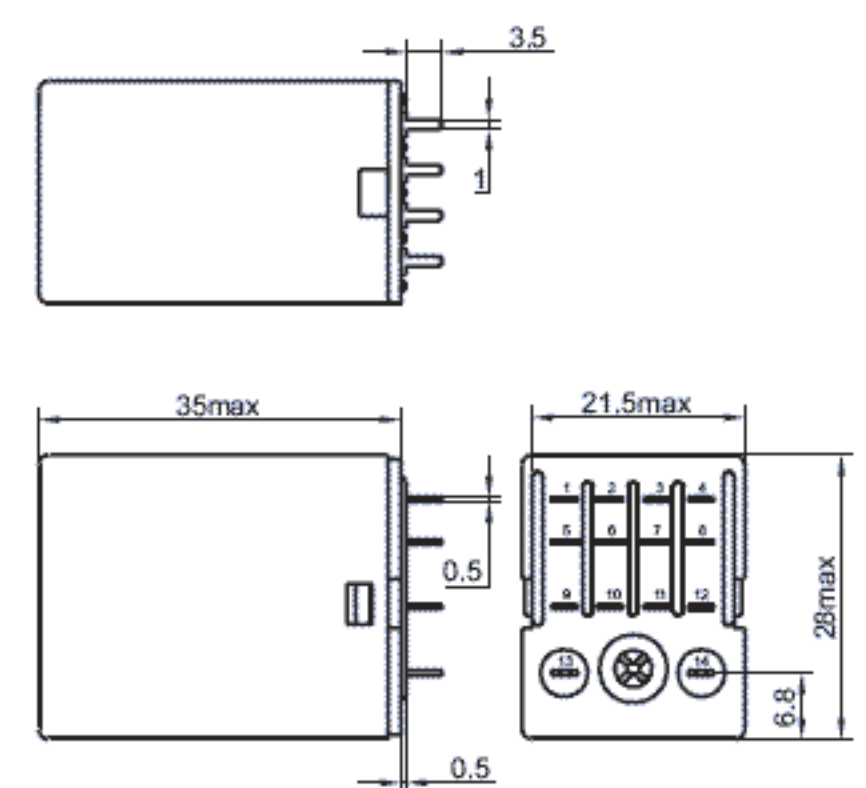
JZX-18FF/ □□□□-2Z2□□ / 3Z2□□



JZX-18FF/ □□□□-4Z1□□

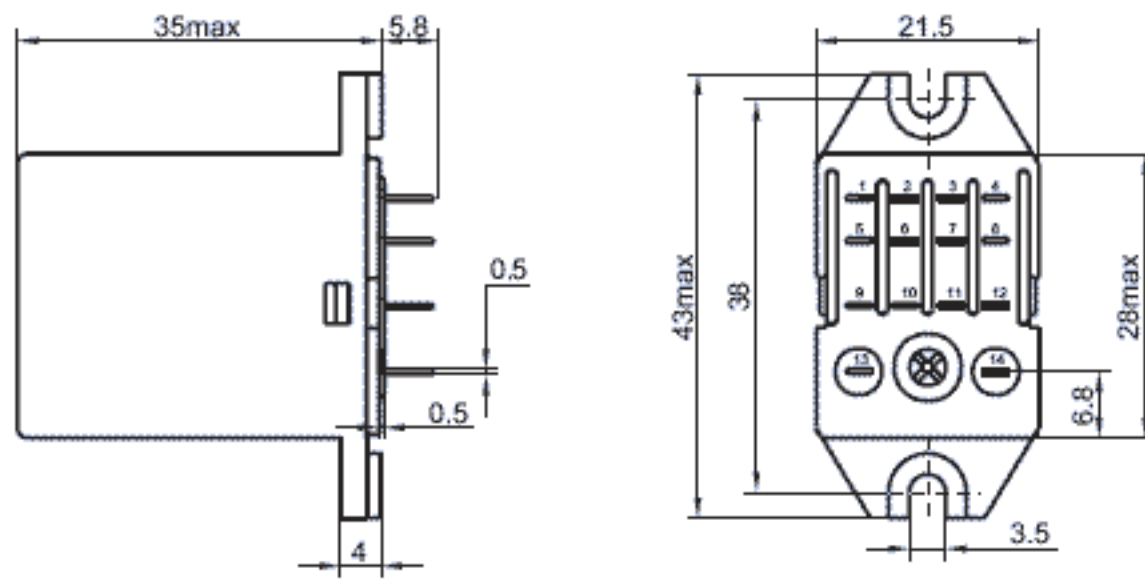


JZX-18FF/ □□□□-4Z2□□

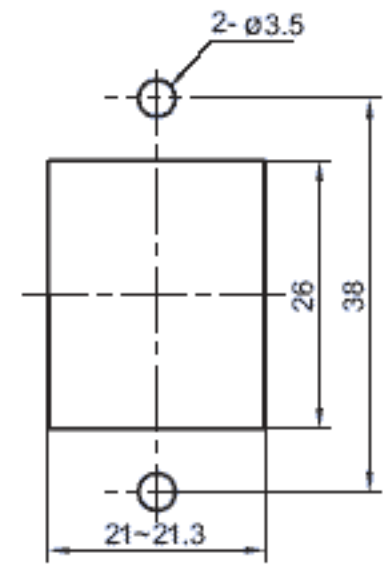


JZX-18FF / □□□□ - 4Z3□□

Outline Dimensions

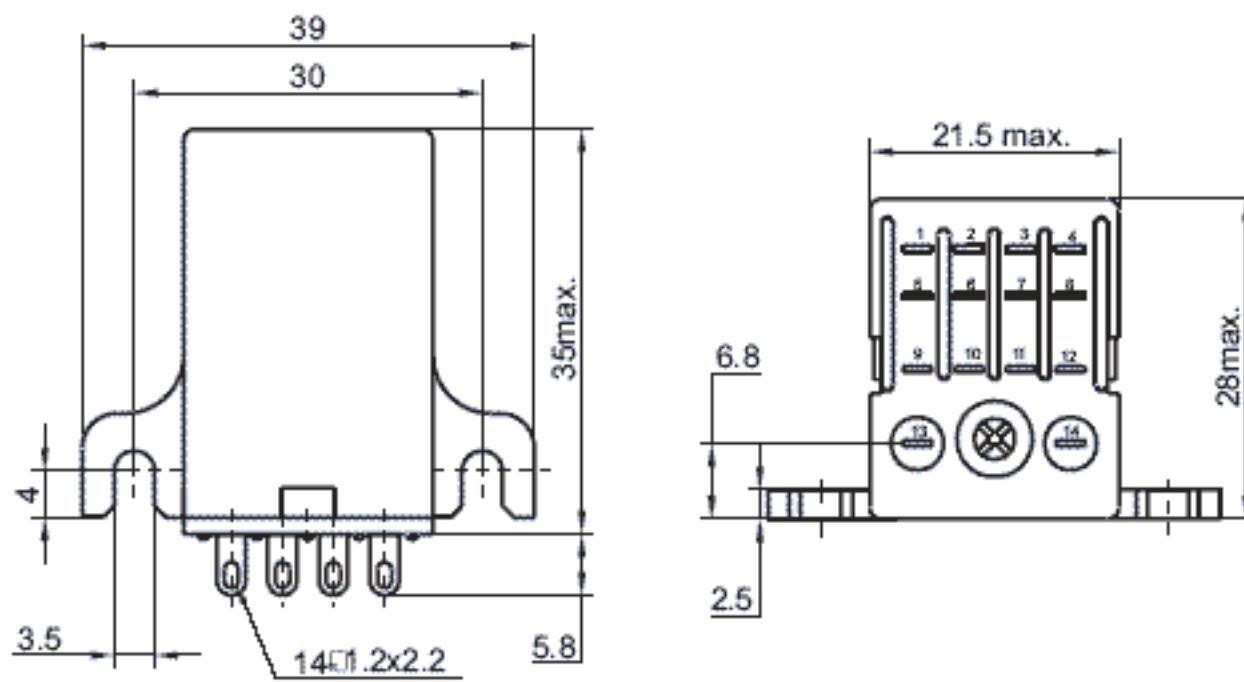


Flange-Mounting Layout

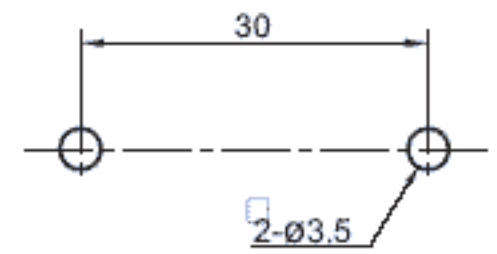


JZX-18FF/ □□□□ - 4Z4□□

Outline Dimensions

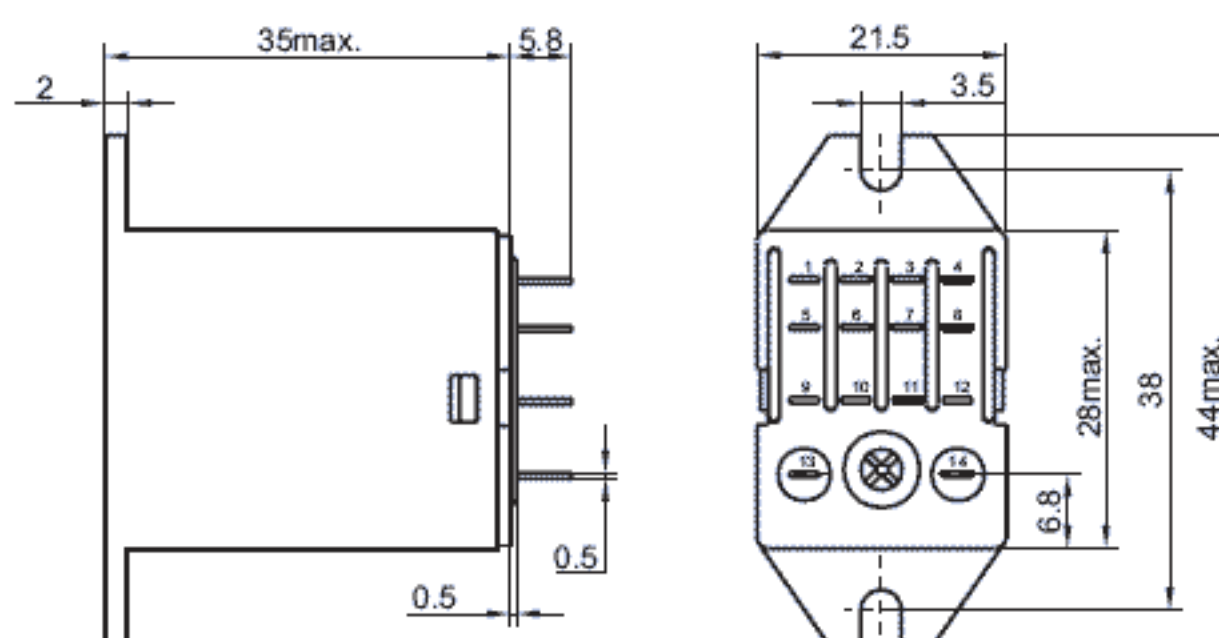


Flange-Mounting Layout

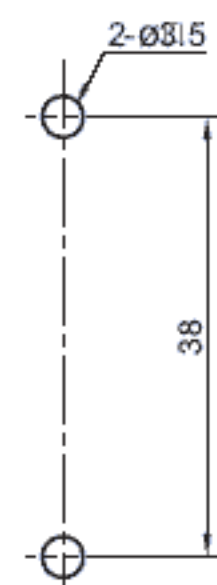


JZX-18FF/ □□□□ - 4Z5□□

Outline Dimensions



Flange-Mounting Layout

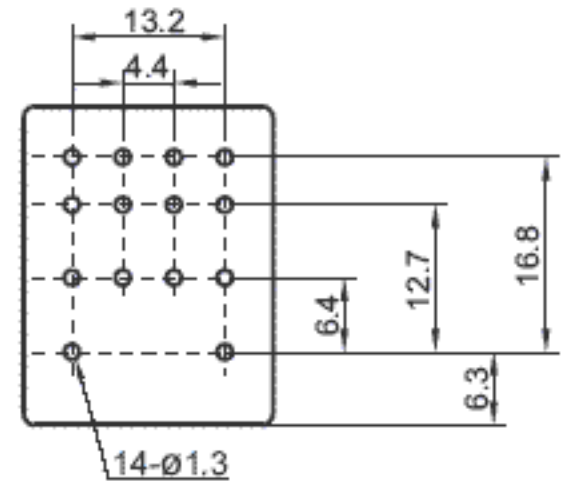
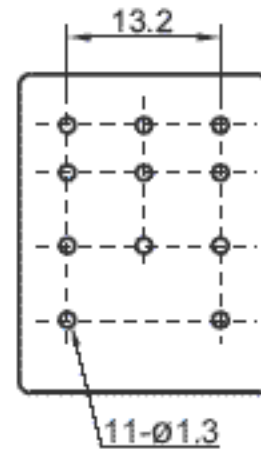
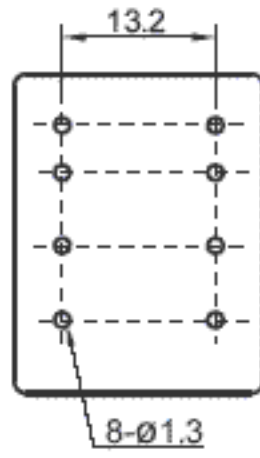


2 From C

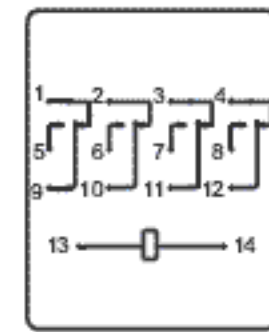
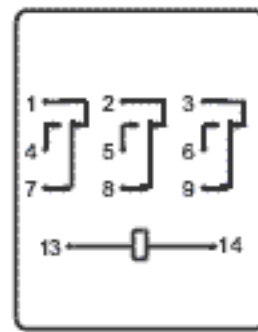
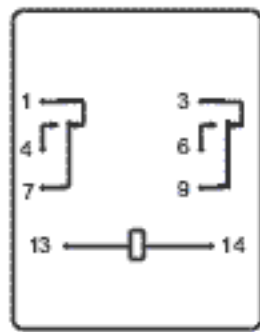
3 From C

4 From C

PCB Layout

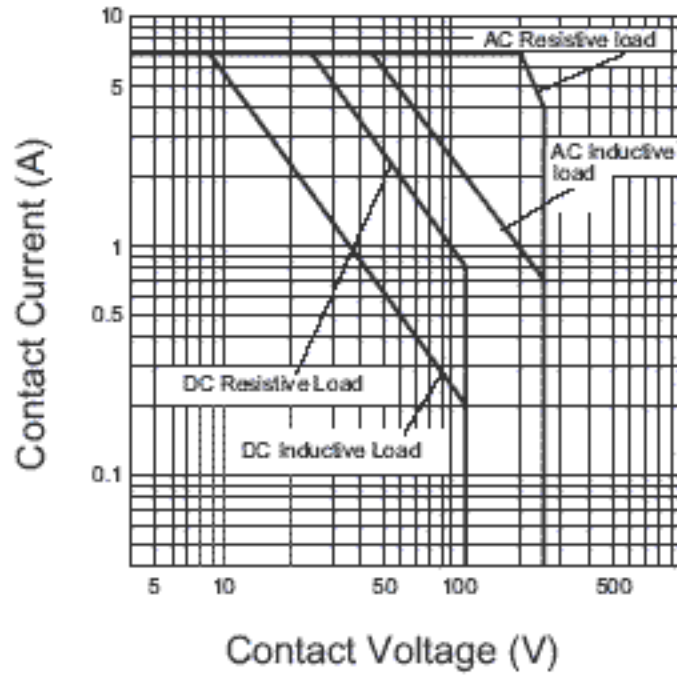


Wiring Diagram



CHARACTERISTIC CURVES

MAXIMUM SWITCHING POWER  
(2, 3 Form C)



MAXIMUM SWITCHING POWER  
(4 Form C)

